

# THE POWER OF INSIGHT

---

INTRODUCING THE NEW



**FALCON™** BIOMASS

Clear view. Clearer direction.

---



## VISION TECHNOLOGY

# CONNECTING YOUR FARM TO THE FUTURE

---

Vision Technology from MSD Animal Health supports healthy ecosystems where aquatic species can thrive. Our holistic approach to aquaculture management enables you to easily:

- **Monitor** for Insight
- **Optimize** with Precision
- **Benchmark** for Performance

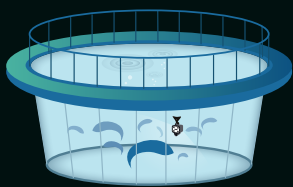
The newest addition, **FALCON™ Biomass**, is a powerful, always-on biomass estimation unit that provides key information about average weight, distribution, and growth trends to improve fish farming operations.

Built with more than 25 years of biomass estimation experience, the best part is the peace of mind you'll have knowing that measurements are collected autonomously, with reduced stress and negative impact on fish welfare or feeding.



## BIOMASS TRACKING

With FALCON™ Biomass in your pen, fish are actively and continually monitored using **stereovision technology**. The system captures fish images in real-time, then uses data from the images to estimate the average weight in the pen.



Continuous **information is collected from the pen as fish swim past FALCON™ Biomass**

The FALCON™ Biomass **data is cataloged and correlated for maximum insights** into your stock

Data is stored in the Cloud and **reporting is delivered straight to the customer dashboard** when you need it



## POWERFUL INSIGHTS

- A user-friendly dashboard delivers a daily report on **average weight, growth, and size distribution** for the population in the pen
- Continuous measurements, **24 hours, 7 days a week** – all wirelessly transmitted
- **Larger samples provide more precise biomass tracking** in each pen for **improved management**

## IMPROVED PERFORMANCE

- **Accessible online reporting** enables more timely decision making
- FALCON™ Biomass monitored pens enable you to **optimize harvest planning** by selecting the best dates to harvest and evaluate options for increasing sales revenue
- Access to key biomass data **improves feeding strategies and medication dosing** for better efficacy



FALCON™ BIOMASS

COMPACT  
AND MIGHTY

---

## OPTIMIZE HARVEST PLANNING

Monitoring pens from growth to harvest, the FALCON™ Biomass system delivers deeper insights to support your harvest planning goals and **provides key information for improved farming operations.**

Through monitoring the biomass over a duration, and comparing the environmental factors and size distribution, your operations benefit from:

- Improved resource and **logistics management** for interventions, harvest, and processing
- **Enhanced feed and stock management**
- More accurate biomass weights help **determine proper dosing for better efficacy**

**FALCON™ BIOMASS**  
**WEIGHS ONLY 11 KG**, so  
the unit is easy to deploy and  
maintain.

A falcon-eyed view from each  
unit delivers deeper insights  
throughout the cycle for  
optimized farming operations.

Capturing  
thousands of  
data points  
daily



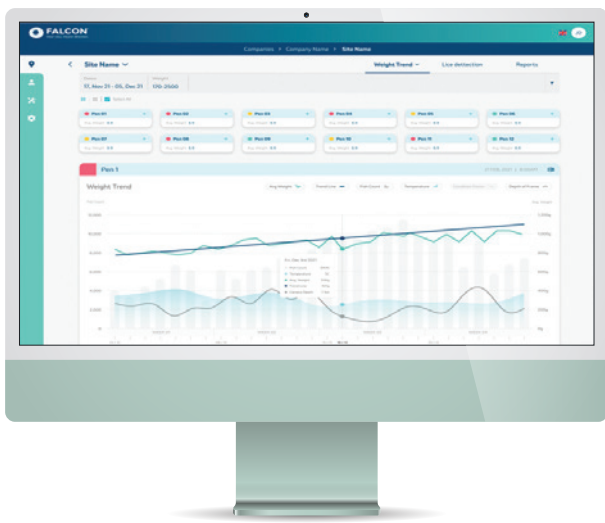
Delivering  
robust data  
analysis and  
reporting



# ACCESS BIOMASS INSIGHTS DAY & NIGHT

---

FALCON™ Biomass measures 24/7, ensuring a good mix from the whole population in the pen. That data is then reported directly to your FALCON™ Biomass dashboard to provide you with:



- **Weight and size distribution** to harvest
- **Growth monitoring**, compared to environmental factors
- **Information to manage** maximum biomass allowance
- **Growth models** with data in near real-time
- Insights to make **key decisions on grading or splitting**
- **Important data shifts** in growth rates, FCR, and condition factor

## SMART DATA

Within the FALCON™ Biomass Application, you can easily monitor, track and analyze the data pertaining to the health of your stock in each of your cages.

Specifically, the **weight trend dashboard** highlights:

- Average weight
- Trend line
- Fish count
- Temperature
- Condition factor
- Camera depth

In addition to the prominent and easy-to-understand weight and condition factor distribution charts, the **weight distribution dashboard** showcases:

- Sample size
- Excluded fish
- Avg. CF
- Coefficient of variation (CoV)
- Avg. weight (g)
- Avg. gutted weight (g)

A person wearing a blue raincoat with the MSD Animal Health logo is seen from the back, standing on a boat. The background shows a body of water with other boats and a cloudy sky.

## OUR LEGACY IN SCIENCE

We've applied our experience to **further innovate development of our fish farming solutions.**

With **over 25 years of biomass estimation expertise**, our technology is focused on your farming needs – *with future vision and functionality built in.*

## YOUR PARTNER FOR INSIGHTS

With MSD Animal Health solutions, you can expect excellent FALCON™ Biomass customer service through our **best-in-class support.**

- Always **available online and printed, user manuals provide detailed, step-by-step guidance** for the most common questions and concerns regarding your equipment or application
- Access to **dedicated technical staff** to support the resolution of challenges you may face
- When needed, **on-site support** to tackle more hands-on technical issues and equipment servicing
- Technical support assesses your system and works to keep you working — **system replacement or on-site repair** keeps things going



LET'S ADVANCE

# FISH WELFARE & SUSTAINABILITY

TOGETHER

---

Learn more at [aquafalcon.com](https://aquafalcon.com)